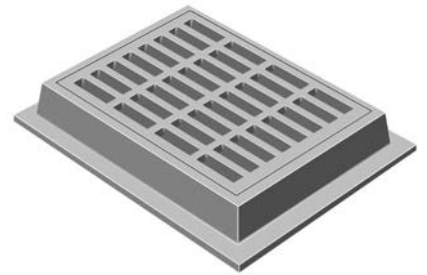
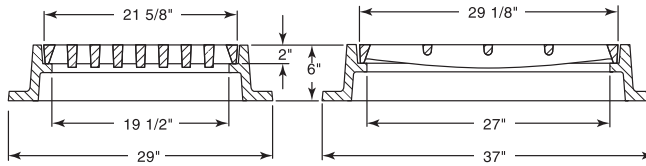


■ Note: When specifying/ordering grates, refer to "Choosing the Proper Inlet Grate" on pages 125-126.
 For a complete listing of FREE OPEN AREAS and WEIR PERIMETERS of all NEENAH grates, refer to pages 327-332.

R-3227-C
Expressway Inlet, Frame, Grate

Heavy Duty

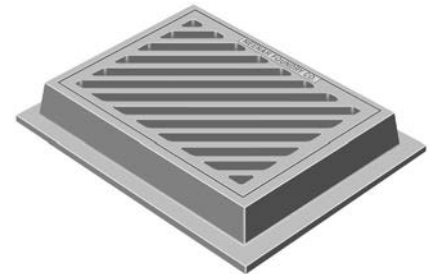
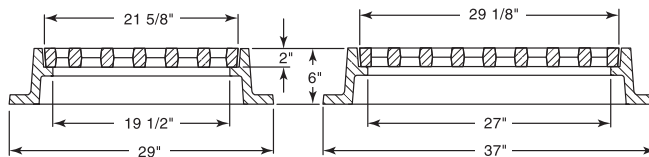


CATALOG NUMBER	GRATE TYPE	SQ. FT. OPEN	WEIR PERIMETER LINEAL FEET
R-3227-C	C	1.9	8.5

32 slotted openings, 1-7/16 x 5-3/4".

R-3227-D
Expressway Inlet, Frame, Grate

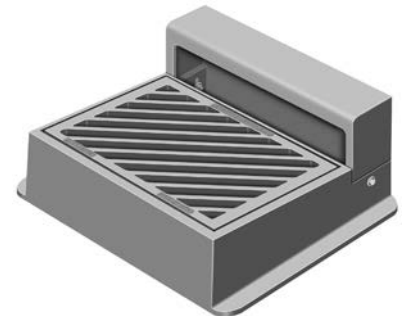
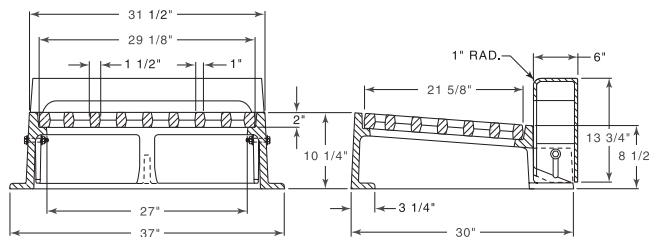
Heavy Duty



CATALOG NUMBER	GRATE TYPE	SQ. FT. OPEN	WEIR PERIMETER LINEAL FEET
R-3227-D	R	2.3	8.5

R-3228-BD
Combination Inlet Frame, Diagonal Grate, Curb Box

Heavy Duty



CATALOG NUMBER	GRATE TYPE	SQ. FT. OPEN	WEIR PERIMETER LINEAL FEET
R-3228-BD	R	2.3	6.0

Curb box adjustable 6" to 9".
 Also available with Type C grate, order as **R-3228-BC**.

Supplied By:



877-903-7246

www.trenchdrainsupply.com

COMBINATION
 INLETS
 3

